

**The Florida West Coast
Section of the IEEE**

Serving over 2,300 members in
Charlotte, Citrus, DeSoto, Hardee,
Hernando, Hillsborough, Lee, Manatee,
Pasco, Pinellas, Polk, and Sarasota
Counties

THE SUNCOAST



IEEE

SIGNAL

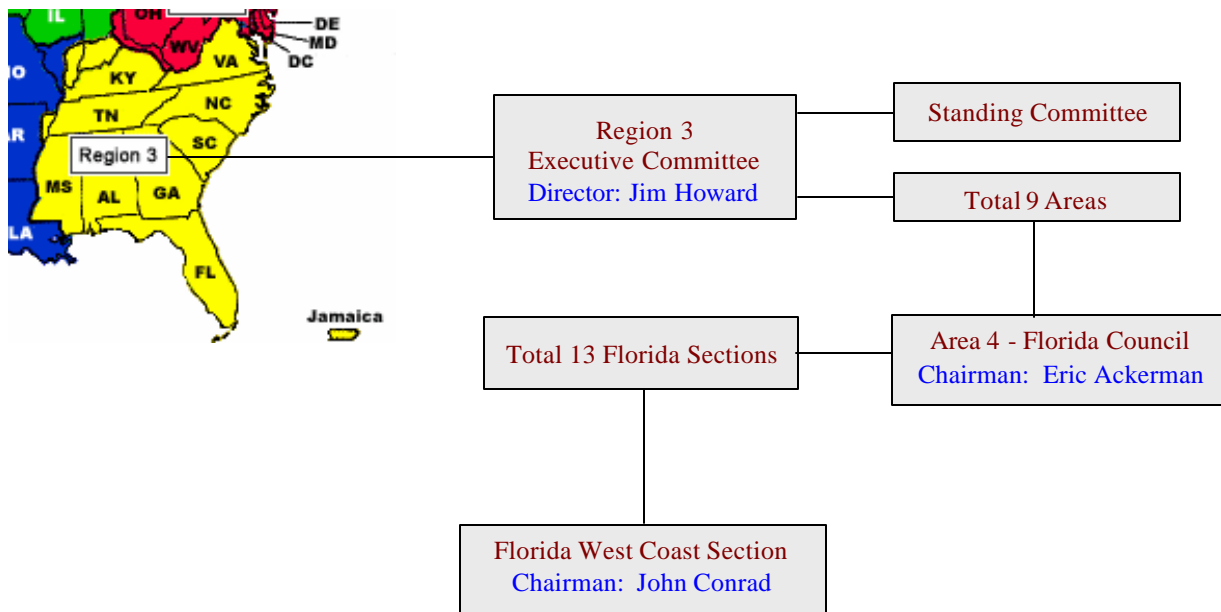
THE INSTITUTE OF ELECTRICAL AND ELECTRONICS ENGINEERS, INC.

IEEE Florida West Coast Section – Who Are We?

The Florida West Coast Section (FWCS) was formed under the name Tampa Section of American Institute of Electrical Engineers (AIEE) on February 1, 1952. The first Chair was Benjamin Nicholson Darlington. He was a Transmission Engineer for Peninsular Telephone Company. The Secretary was Charles John Ellis. He was the Manager of the Tampa Office of the General Electric Company. Today, Florida West Coast Section has more than 2,300 local members focused on the West Coast of Florida. We are a member of the IEEE Florida Council, which represents the thirteen Florida Sections and its approximately 10,000 members.

The IEEE worldwide membership is divided into ten regions. Florida is contained in region 3 which includes most of the states in the Southeast United States and Jamaica. Both the Florida Council and the Florida West Coast Section are part of IEEE Region 3. There are more than 32,000 members in Region 3.

Our Section is active with currently nine Society Chapters in operation. Many of these Chapters are operating as joint Chapters and hold scheduled meetings throughout the year. We also collaborate with other technical societies to share meetings and speakers. Typically meetings can be tours of local facilities, such as Tampa International Airport, nationally recognized speakers, or just local members sharing their knowledge and skills. The goals are to provide information to our membership and to keep them up-to-date on the changes occurring in their profession.



We also hold the local Section Executive Committee meeting monthly throughout the year, normally on the first Tuesday of each month at the Tampa Electric Company downtown plaza. Guests are always welcome at our local Section Executive Committee meetings.

**2003 IEEE EXECUTIVE COMMITTEE
FLORIDA WEST COAST SECTION**

CHAIRMAN: John Conrad
Windsor Inc. (813) 926-4004
john.conrad@ieee.org

VICE CHAIRMAN: Arthur L. Nordlinger, PE
813-508-2952
a.nordlinger@ieee.org

SECRETARY: Jules Joslow
ElectroMark, Inc. (800) 274-2383
jjoslowemi@aol.com

TREASURER: Ralph Painter
Tampa Electric Co. (813) 641-5224
rdpainter@ieee.org

SIGNAL EDITOR: Quang Tang
Seminole Electric (813) 739-1222
q.tang@ieee.org

AWARDS: Richard Beatie, PE
r.beatie@ieee.org

BYLAWS: Richard Beatie, PE
Consultant 813-289-0252
r.beatie@ieee.org

EDUCATION: Dr. Rudolf E. Henning and Zhen Tong
(813) 974-4782 or (727) 523-1336
henning@eng.usf.edu or zhen@tampabay.rr.com

PACE: Scott Haynes and Richard Martino
Consultants (813) 994-3011 or (727)536-1776
wshaynes@ieee.org or
richard@richardmartino.com

MEMBERSHIP: Rosemary Dakos
Consultant (813-792-2215
rdakos@tampabay.rr.com

STUDENT BRANCH CO-ADVISORS:
Dr. Paris Wiley, USF (813) 974-4743
wiley@eng.usf.edu

STUDENT BRANCH MENTOR: Jim Howard
Lakeland Electric (813) 876-1748
j.howard@ieee.org

STUDENT BRANCH CHAPTERS: Angela Alexander
(813) 974-4776
aalexand@eng.usf.edu

PES/IAS CHAPTER: Arthur L. Nordlinger, PE
813-508-2952
a.nordlinger@ieee.org

MTT/AP/ED CHAPTER: Shawn K O'Brien
Raytheon Systems Co.
shawn_k_obrien@ieee.org

COMP/AESS CHAPTER: James S. Lumia
(813) 832-3501
jlumia@ieee.org

SP/COMM CHAPTER: Bror W. Peterson
Raytheon Systems Co. (727) 302-4710
Bror_W_Peterson@raytheon.com

LIFE MEMBER CHAPTER: Jules Joslow
ElectroMark, Inc. (800) 274-2383
jjoslowemi@aol.com

GOLD: Dennis Trask d.trask@ieee.org

WEB PAGE <http://ewh.ieee.org/r3/floridawc>

WEB MASTER: Jim Anderson
jim.anderson@ieee.org

THE SUNCOAST SIGNAL is published monthly by the Florida West Coast Section (FWCS) of the Institute of Electrical and Electronics Engineers, Inc. (IEEE). THE SUNCOAST SIGNAL is sent each month to members of the IEEE on Florida's West Coast. Annual subscription is included in the IEEE membership dues. The opinions expressed, as well as the technical accuracy of authors, advertisers or speakers published in this newsletter are those of the individual authors, advertisers, and speakers. Therefore, no endorsement by the IEEE, its officers, or its members is made or implied. All material for THE SUNCOAST SIGNAL is due by the Friday following the 1st Thursday of the month preceding the issue month. Address all correspondence to:

Quang Tang - Seminole Electric Cooperative, Inc.
P.O. Box 272000, Tampa, Florida 33688-2000
Voice: (813) 739-1222 Fax: (813) 264-7906
E-MAIL: q.tang@ieee.org
The Signal, Copyright 2003



Chair's Comment

By John Conrad

Here are a few of the things that kept me out of trouble this month.

- The Student Pilot Program for assessing student member attitudes towards the IEEE as they progress through school and enter the workforce.
- The preparations for the I&CPS conference in May 2004 such as opening a concentration bank account and updating the conference website.
- As Membership Development Chair on the Florida Council I investigated various gifts, with the IEEE logo, that the council could purchase for resale to Florida sections as speaker gifts etc.
- Sections Congress 2005 orientation meeting for the Local Host Committee
- SouthCon and the Florida Council meeting at the Tampa Convention center.
- An inspiring Southeastcon in Jamaica.

Southeastcon is an annual meeting where all the section leaders in Region 3 have an opportunity to meet and exchange ideas and experiences. Each time I introduced myself to another section chair, whether from Kentucky or Carolina I received a comment such as "Florida West Coast? You have a really active section don't you?" It is really hit home how fortunate I am to be a member of a section with such a busy and varied schedule of events. If I brought nothing else back from the conference it was an appreciation for the work of our section volunteers and a commitment to maintain and improve the "products and services" we provide to our members.

At the conference I learned a lot about councils, areas, divisions, societies, boards and regions and their roles in the complex organization of the IEEE. I also learned a great deal about student activities such as the hardware and software competitions and I had an opportunity to see the Region 3 Director being "laid back and charismatic" as one distinguished Jamaican described our very own Jim Howard.

Finally, I learned a little about Jamaica from the experts. I am grateful for the experience.

Congratulations to New Senior Member

Seung N. Kang
Power Engineering Society



IEEE/PES Switchgear Committee Meeting

St. Pete Beach, Florida

4 May - 8 May 2003

You are invited to participate in the activities of the IEEE/PES Switchgear Committee

Location:

The Trade Winds Sirata Beach Resort Hotel is located on 12 acres of natural beachfront on the Gulf of Mexico. For more information on the Trade Winds Sirata Beach Resort, visit their web page at www.tradewindsresort.com. For more information on St. Petersburg, go to <http://www.stpete.org/>.

The Switchgear Committee has negotiated a special room rate of \$119 plus taxes US for single or double occupancy. A limited amount of one-bedroom suites are available for \$159 plus taxes US. Reservations must be made by 3 April, 2003 to ensure your reservation at the negotiated rate. Use of the Meeting hotel by the attendees is crucial in keeping the conference costs low. For reservations call 800-808-9833 or e-mail: groupreservations@twresort.com. When reserving your rooms mention the "IEEE/PES Switchgear Committee" to ensure you get the correct rate.

Travel:

Tampa International and the St. Petersburg/Clearwater airports are less than an hour drive from St. Pete Beach. Transportation from the airport by Super Shuttle will cost approximately \$19 one way. (www.supershuttle.com or 1-800-622-2089) Taxi service runs approximately \$48 to \$75 US from the Tampa International Airport.

Driving directions: From Tampa International and I-4, take the lane to I-275 South, "to St. Petersburg." Exit I-275 South at the Pinellas Bayway (Exit 4) to St. Pete Beach. Turn right on Gulf Blvd.; Trade Winds Island Resorts are on the left about 1.5 miles north.

Contact Information:

For more information regarding the meeting, contact the Switchgear Committee Secretary/Treasurer: Ted Burse, Powell Electrical Manufacturing Company, Phone: 713-948-4599, Fax: 713-948-4512, Email: tburse@ieee.org

Schedule:

Sunday, 4 May, Registration 4-6 PM

Monday, 5 May, Registration 7-8 AM, Committee Meetings, and Companions Breakfast

Tuesday, 6 May, Registration 7-8 AM, Committee Meetings, Companions Breakfast, and Luncheon

Wednesday, 7 May, Committee Meetings, Companions Breakfast, and Evening Social Event

Thursday, 8 May, Continental Breakfast, Main Committee Meeting, and Companions Breakfast

Attire for the meetings is business casual.

Registration:

Local Attendees – \$25 US; Tuesday Luncheon – \$25 US; Wednesday Event – \$50 US; Companions – \$35 US

See Switchgear Committee Web site below for registration form and details.

Events:

A luncheon, with invited speaker, is planned for Tuesday, 6 May 2003, at the Trade Winds Sirata Beach Hotel.

The Wednesday evening social event will be at The Columbia Restaurant. Founded in 1905 by Cuban immigrant Casimiro Hernandez, Sr., it began in Tampa's Ybor City as a small café. It is now the oldest restaurant in Florida and the largest Spanish restaurant in the world. Ybor City is a National historic landmark district and once the "Cigar Capitol of the World".

**Switchgear Committee Web Site: <http://www.ewh.ieee.org/soc/pes/switchgear/index.htm>
Or access from the Switchgear Committee link on the PES web site**

IEEE/PES Surge Protective Devices Committee Meeting



St. Pete Beach, Florida

12 May - 15 May 2003

You are invited to participate in the activities of the IEEE/PES SPD Committee

The SPD Committee

The surge protective devices committee is a committee of the Power Engineering Society. The purpose of the committee is to develop standards for low, medium and high voltage surge protective devices of all types and applications. The meeting agenda consist of all aspects of surge protection. Experts from industry, academia, and users attend regularly and openly share their knowledge and experience with everyone involved.

Location:

The Trade Winds Beach Resort Hotel is located on 12 acres of natural beachfront on the Gulf of Mexico. For more information on the Trade Winds Beach Resort, visit their web page at www.tradewindsresort.com. For more information on St. Petersburg, go to <http://www.stpete.org/>. Meeting details will be posted on our website at <http://grouper.ieee.org/groups/spd/> by the end of March. The agenda will be similar to the Fall 2002 meeting agenda with meetings all day Monday through Thursday. On Thursday, a luncheon is held with a speaker discussing aspects of surge protection.

Travel:

Tampa International and the St. Petersburg/Clearwater airports are less than an hour drive from St. Pete Beach. Transportation from the airport by Super Shuttle will cost approximately \$19 one way. www.supershuttle.com or 1-800-622-2089) Taxi service runs approximately \$48 to \$75 US from the Tampa International Airport.

Driving directions: From Tampa International and I-4, take the lane to I-275 South, "to St. Petersburg." Exit I-275 South at the Pinellas Bayway (Exit 4) to St. Pete Beach. Turn right on Gulf Blvd.; Trade Winds Island Resorts are on the left about 1.5 miles north.

Tentative Schedule:

Monday, 12 May

Working Group Meetings 8am – 5pm
Registration in Hosp Suite 5pm – 8pm

Tuesday, 13 May

Working Group Meetings 8am – 5pm
Registration in Hosp Suite 5pm – 8pm

Wednesday, 14 May

Working Group Meetings 8am – 5pm
Registration in Hosp Suite 5pm – 8pm
Evening Social Event – Time TBD later

Thursday, 15 May

Meetings 8am – 12 noon
Luncheon 12 noon – 2pm
Main Committee Meeting 3pm – 5pm

Attire for the meetings is business casual.

Registration:

Basic Registration waived for local participants.

Wednesday Event	\$35 US
Companions	\$35 US
Thursday Luncheon	\$25 US
Companions	\$25 US

Events:

A luncheon, with invited speaker, is planned for Thursday, 15 May 2003, at the Trade Winds Beach Hotel. The Wednesday evening social event will be an evening dinner cruise on the intercostals waterway.

Technical Seminar

NFPA 70E Electric Safety Requirements for Employee Workplaces and IEEE 1584 Guide for Performing Arc Flash Hazard Calculations

Presented by PES/IAS Chapter



4 PDH

Will Be Awarded

- Date/Time: Thursday, May 29, 2003
Registration 8:00 AM - 8:30 AM
Seminar 8:30 AM to 2:00 PM
Continental breakfast and lunch will be provided
- Speakers: NFPA 70E – James E. Bowen, PE
Member, IEEE
Technical Director, Powell Electrical Manufacturing Company
- IEEE 1584 – Thomas H. Blair, PE
Senior member, IEEE
Consulting Engineer, Tampa Electric Company
- Location: Tampa Electric Company
Production Services Center (PSC)
6944 U.S. Hwy 41 North
Apollo Beach, FL 33572-1500
- Cost: IEEE members, \$50
Non-members, \$100
Please make your check payable to: IEEE-FWCS
- RSVP: Online at: http://ewh.ieee.org/r3/floridawc/pes_titles.html
Space is limited to 40 attendees
- Questions: Art Nordlinger a.nordlinger@ieee.org or
Phone at 813-630-6203

The NFPA 70E standard addresses those electrical safety requirements for employee workplaces that are necessary for the practical safeguarding of employees. This standard is being significantly updated for 2003. This presentation introduces NFPA 70E to the audience. We will discuss the recommendations for establishing shock hazard and arc flash hazard boundaries. The presentation will review the recommended personnel protective equipment for various tasks normally conducted in and around medium voltage and low voltage equipment commonly found in the industrial and power plant environment. This second part of this presentation is an overview of IEEE 1584 which provides the tools and methodology for determining the boundaries of arc-flash hazard.

For Florida Professional Engineers:

Four (4) professional development hours (PDH's) will be awarded applicable to the State of Florida's continuing education requirements for PE renewal upon completion of the seminar. Be sure to include your license number and your name as it appears on your license with your reservation. Florida provider number EXP 00015.

Space is limited to 40 attendees. To ensure your reservation, please send your check in advance to Art Nordlinger, 1480 Gulf Blvd. #906, Clearwater, FL 33767.

Substation Protection and Integration Concepts and Implementation Seminar

Sponsored by the Florida Electric Cooperatives Association and the Power Engineering Society



- Speaker: David Denison, P.E. Engineering Fellow
Tampa Electric Company
- Date: June 12, 2003
- Time: Registration and continental breakfast 8:00 AM – 8:30 AM
Seminar 8:30 AM – 3:00 PM with a one hour break for lunch (not provided)
- Location: Adams Mark Hotel, Clearwater Beach
- Registration: Register on-line at http://www.ewh.ieee.org/r3/floridawc/pes_titles.html
Registration is limited to 40 participants.
- Cost: Members \$25, Non-members \$55, Student Members \$10

Registration must be paid in advance. Send checks payable to FECA to:

Raymond G. Trusik
Florida Electric Cooperatives Association
2916 Apalachee Parkway
Tallahassee, FL 32301

For more information Contact Art Nordlinger 813-630-6203 or email a.nordlinger@tecoenergy.com

Five professional development hours will be awarded for completion of the seminar. Florida Provider Number EXP00015

Job Opportunity

EMI/RFI Sales Engineer

Location: Southeast (GA, AL, FL, NC, SC) or Mid-Atlantic region or Northern CA.

Requirements: Candidate must have minimum 3 years EMI/RFI sales experience and 3 years Application Engineering in EMI/RFI filter design and development. Knowledge of Military/Defense/Aerospace markets a must, plus active working relationship with clients in these markets. Minimum BA or BS required; BSEE preferred.

Company: Custom EMI/RFI filter manufacturer dealing in multicircuit filters, powerline filters and custom minifilters. Business - 98% Military/Defense/Aerospace plus some commercial aircraft medical work.

The successful candidate will be a knowledgeable self starter, well organized, computer literate and already living and working in one of the above regions.

Candidate must have an active database of clients in the Military/Defense/Aerospace markets. Send resume to item@rbitem.com

A Message from the Membership Development Chairman to IEEE Members!

By Rosemary Dakos, PMP, rdakos@ieee.org
FWCS Membership Development Chairman

In these times of stress in dealing with the global war on terrorism, the war in Iraq, rush hour traffic, unemployment, and portfolios that lost what we hoped to retire on. It is difficult to place our IEEE and FWCS membership at the top of our list of things to do. I would like to thank those of you who did and remembered to renew your membership.

I ask for your indulgence now. Think back on your career and accomplishments. How long has it been since you thought about the great things that you have done in Engineering and for your Company, the Community, and the Country? How long has it been since you reviewed and updated your resume? Can you say to yourself "Wow, I have really done some great work?"

Just imagine the prestige of someone seeing Senior Member of the IEEE on your resume. Imagine your pride when your colleagues see your engraved wooden and bronze plaque on display in your office. IEEE will reward you with a gift certificate for up to \$25 off a Society Membership. Upon your request, a commendation letter will be sent to your employer regarding your achievement of Senior Member status. There's more--If you have Internet access, go to www.ieee.org and check out the Senior Member Benefits and "Guide to Applying." If you prefer paper, I will mail you this information and an application. In either case let me know when you are ready to upgrade.

Go for it now! Don't procrastinate another day. All of our Section's Executive Committee members are willing to help you achieve this goal.

Student Corner

By Tracey Ballard, Student Branch Vice-President

Imagine driving through the countryside, window open, sitting back and relaxing as the cool sea breeze hits your face. This relaxing picture was realized at SoutheastCon 2003 in Jamaica. Although Angela Alexander and I arrived late Friday and left early Sunday morning, we enjoyed meeting many of our fellow students as they competed in the various competitions. We want to recognize everyone who entered competitions or who might have helped keep them running for their hard work; it truly showed.

For me, it was not only a "mini" vacation, but also the beginning of the end of my service as IEEE Vice-President of the USF Student Chapter.

With my graduation this spring, I will take with me many fond memories of my service to the USF Student Branch of IEEE. I have met individuals who have made an impact on me not only as a student but also as a person. I want to personally thank Jim Howard and his wife for giving our chapter the support and guidance we needed through rough times recently. Through his patience and understanding, we are on our way to rebuilding the strong reputation of the Branch.

Congratulations, fellow graduates. Best wishes for the future. And best of luck to the Branch.

News from the IEEE Foundation

By Karen Galuchie, k.galuchie@ieee.org
IEEE Development Operations Manager

Consortium of Technology Education Companies to Sponsor the IEEE James H. Mulligan, Jr. Education Medal - The IEEE Foundation is pleased to announce that four technology education companies, The MathWorks, Inc., National Instruments Foundation, Pearson Prentice Hall, and Xilinx, Inc., recognize the importance of an educator's contributions to the vitality, imagination, and leadership of the engineering profession, and have agreed to sponsor the IEEE James H. Mulligan, Jr. Education Medal from 2004 to 2006. This Medal may be presented annually, to an individual, for a career of outstanding contributions to education in the fields of interest of the IEEE.

IEEE Foundation's Latest Grants to Impact Pre-College Education - At its March 2003 Board of Directors Meeting, the IEEE Foundation authorized just over US\$60,000 in new grants to support projects that encourage collaborations between engineers and local school districts; cultivate the next generation of engineers; and increase the understanding of the complex interactions between science, technology, and society.

IEEE Virtual Museum Turns One - February 2003 marked the one-year anniversary of the launching of the IEEE Virtual Museum. Since it opened its virtual doors, this extraordinary educational tool has been helping educators, students, and the general public explore technology by demonstrating how it works, describing the people who invented it, and explaining how these technologies have shaped the world in which we live.

May 2003 Calendar of Events

Sunday	Monday	Tuesday	Wednesday	Thursday	Friday	Saturday
				1	2	3
4 <i>IEEE/PES Switchgear Committee Meeting May 4-8, 2003</i>	5	6 <i>IEEE FWCS EXCOM Meeting at 5:30pm TECO Plaza</i>	7	8	9	10
11	12 <i>IEEE/PES Surge Protective Devices Committee Mtg May 12-15, 2003</i>	13	14	15	16	17
18	19	20	21	22	23	24
25	26	27	28	29 <i>PES/IAS Seminar on NFPA 70E & IEEE 1584 8:00 – 2:00PM</i>	30	31

Institute of Electrical and
Electronics Engineers, Inc.
Florida West Coast Section
3133 W. Paris
Tampa, Florida 33614

NON PROFIT ORG U.S. POSTAGE PAID TAMPA, FL. PERMIT No. 1197

DATE SENSITIVE MATERIAL. DO NOT DELAY

Change of address? IEEE Web Contact Update <http://www.ieee.org/membership/coa.html>
Or send address changes including your name, IEEE Member number and all pertinent information to:
IEEE, 445 Hoes Lane, P.O. Box 1331, Piscataway, NJ 08855-1331 or call (800) 678-4333
Or fax your address changes to (732) 562-5445