

**The Florida West Coast  
Section of the IEEE**

Serving over 2,300 members in Charlotte,  
Citrus, DeSoto, Hardee, Hernando,  
Hillsborough, Lee, Manatee, Pasco, Pinellas,  
Polk, and Sarasota Counties



**THE**

**SUNCOAST**

**SIGNAL**

*THE INSTITUTE OF ELECTRICAL AND ELECTRONICS ENGINEERS, INC.*

**This Month's Meetings**

**Tuesday, April 3rd: EXCOM Meeting**  
**Meeting starts at 5:30PM At TECO Plaza**

**Register online at <http://time2meet.com/fwcs-excom/index.html>**

**Open to all FWCS Members**

---

***PES/IAS Tour of Wheelabrator Ridge Energy Inc.***

**Thursday April 26, 2012**

**Time: 2PM - 4PM**

**[Details on page 6](#)**

---

***(Coming in May) PES/IAS White Book Seminar***

**Speaker: Hank Johnson, P.E. and Curtis Latzo, PhD, P.E.**

**May, 2012**

**Time: 9:00 AM to 2:00PM**

**[Details on page 7](#)**

---

***IEEE USF Student Branch Elect New officers to Serve***

***For Fall 2012 - Spring 2013!***

**[Details on page 9](#)**

---

***Did you Know. . .***

***FREE E-Book Each Month for Members***  
***From IEE-USA – See Page 2 for Details***



***Inside This Signal...***

***Page 2***

***\*Editors Column***

***\*Did You Know?***

***\*USF IEEE Semi-annual  
Picnic***

***Page 3***

***\*IEEE USF Engineering  
EXPO 2012***

***\* Winter 2011-2012 Issue  
OF IEEE USA In Action  
Available***

***Page 4***

***IEEE T & D Conference  
May 7 – 10, 2012***

***Page 5***

***\*\*"Making Innovations  
Work for Tomorrow"***

***Page 8***

***\*IEEE Gold Event***

***\*Signal Advertising  
Section***

***Page 10***

***\*Calendar***

## 2012 IEEE EXECUTIVE COMMITTEE

### FLORIDA WEST COAST SECTION

CHAIR: Serge Beauzile (863) 834-6511 [serge.beauzile@ieee.org](mailto:serge.beauzile@ieee.org)

VICE CHAIR: Claude Pitts, [cpitts7@tampabay.rr.com](mailto:cpitts7@tampabay.rr.com)

SECRETARY: Sean Denny, [venner20@ieee.org](mailto:venner20@ieee.org), 727-678-0183

TREASURER: Dr. Paul Schnitzler (813) 974-5584  
[pauls@eng.usf.edu](mailto:pauls@eng.usf.edu)

SIGNAL EDITOR: Donna Howard, Serge Beauzile  
Phone (813) 207-7966 [dhoward@frcc.com](mailto:dhoward@frcc.com)

[Serge.beauzile@ieee.org](mailto:Serge.beauzile@ieee.org)

AWARDS & BYLAWS : Richard Beatie, PE,  
[r.beatie@ieee.org](mailto:r.beatie@ieee.org)

MEMBERSHIP: Jim Howard, Lakeland Electric (863)834-6585  
[jhoward@ieee.org](mailto:jhoward@ieee.org)

TEACHER IN-SERVICE: Sean Denny: [Venner20@ieee.org](mailto:Venner20@ieee.org)  
(727) 678-0183

PES/IAS CHAPTER: Serge Beauzile, Lakeland Electric,  
(863) 834-6511 [serge.beauzile@ieee.org](mailto:serge.beauzile@ieee.org)

MTT/AP/ED CHAPTER: Jing Wang [jingw@usf.edu](mailto:jingw@usf.edu)

COMP/AESS CHAPTER: James S. Lumia (813) 832-3501,  
[jlumia@ieee.org](mailto:jlumia@ieee.org)

EMBS: Engineering in Medicine & Biology: John West: 727-743-  
2267, [john.west@ieee.org](mailto:john.west@ieee.org)

ROBOTICS and AUTOMATION SOCIETY, George Schott,  
[george.schott@ieee.org](mailto:george.schott@ieee.org)

SP/COMM CHAPTER: Hector Martinez, [abelhect@hotmail.com](mailto:abelhect@hotmail.com)

WIE: Women in Engineering: Valerie Tur, (813) 313-7608,  
[Valerie.tur@rexelusa.com](mailto:Valerie.tur@rexelusa.com)

LIFE MEMBER AFFINITY GROUP: Bob Franklin  
[boatseven@aol.com](mailto:boatseven@aol.com)

GOLD: Bashar Salahia, [bsalahia@mail.usf.edu](mailto:bsalahia@mail.usf.edu)

PACE: Jim Anderson , (813) 425-2467  
[jim.anderson@ieee.org](mailto:jim.anderson@ieee.org)

STUDENT BRANCH CO-ADVISORS:  
Dr. Paul Schnitzler, USF PS&A (813) 974-5584  
[pauls@eng.usf.edu](mailto:pauls@eng.usf.edu)  
Dr. Andrew Hoff, [hoff@usf.edu](mailto:hoff@usf.edu)

STUDENT BRANCH MENTOR: Jim Howard, Lakeland Electric  
(863) 834-6585 [j.howard@ieee.org](mailto:j.howard@ieee.org) (H) (813) 876-1748

STUDENT BRANCHES:

Victor Basantes, [vbasante@mail.usf.edu](mailto:vbasante@mail.usf.edu)

CONFERENCES: Jim Beall, [j.beall@ieee.org](mailto:j.beall@ieee.org)

WEB PAGE: <http://www.ieee.org/fwcs>

WEB MASTER: Claude Pitts, III, [cpitts7@tampabay.rr.com](mailto:cpitts7@tampabay.rr.com)

THE SUNCOAST SIGNAL is published monthly by the Florida West Coast Section (FWCS) of the Institute of Electrical and Electronics Engineers, Inc. (IEEE). THE SUNCOAST SIGNAL is sent each month to members of the IEEE on Florida's West Coast. Annual subscription is included in the IEEE membership dues.

The opinions expressed, as well as the technical accuracy of authors, advertisers or speakers published in this newsletter are those of the individual authors, advertisers, and speakers. Therefore, no endorsement by the IEEE, its officers, or its members is made or implied.

All material for THE SUNCOAST SIGNAL is due in electronic form by 1<sup>st</sup> Sunday after the 1<sup>st</sup> Tuesday of the month preceding the issue month.

Address all correspondence to:

**Donna Howard**  
3133 W Paris Street  
Tampa, FL 33614-5964  
Home Phone 813-876-1748  
E-MAIL: [dhoward@frcc.com](mailto:dhoward@frcc.com)  
The Signal, Copyright 2012

## Editors Column

It's April already – one-fourth of this year is gone and we can't get it back. How much have you accomplished during this first quarter of 2012? Is your "To-Do" list growing longer each day? There's help just around the corner. Join one of the IEEE activities listed in the FWCS Signal each month and you will find that you will have more ambition and energy to tackle those projects. You won't know for sure, until you try! Also, be sure to check out the IEEE Solutionists video discussed on page 6 of this Signal newsletter.



### Did you know?

As a special benefit to IEEE members, IEEE-USA is providing members with one complimentary E-Book each month. Check your email in-box for this month's *Today's Engineer Email Update* for the download link or check the website for *Today's Engineer* at <http://www.todaysengineer.org/>.



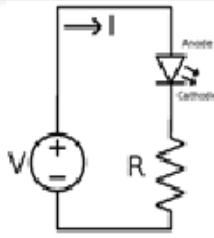
### USF IEEE Semi-annual Picnic

On Saturday March 3<sup>rd</sup>, the IEEE student branch at the University of South Florida hosted our Spring Picnic. We had a great turnout of over 40 people attending throughout the day. Everyone enjoyed hotdogs and burgers, however the biggest hit was lumpia (Filipino spring roll), which was made by our secretary Kelley Allenegui. Professors and students alike had a blast with various activities such as tug of war, volley ball, Frisbee, football and canoeing.

*David Touvell*

*IEEE USF Events and Fundraising Chair*





**Great Sales Engineer Opportunity**

Need a problem solver with a can do spirit!

**Qualifications:**

- BSEE
- Excellent Communication Skills
- Solid background in T&D and Substation Products

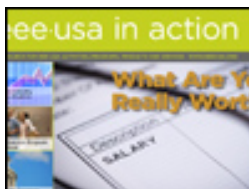
All replies will be held in the strictest confidence

**Reply To:**

Sales Engineer  
 P.O. Box 10753  
 Tampa, FL 33679  
 powerscomp@aol.com.

**Winter 2011-2012 Issue of IEEE-USA in ACTION Available**

The Winter issue of [IEEE-USA in ACTION](http://www.nxtbook.com/nxtbooks/ieeusa/ieeusa_winter11/) ([http://www.nxtbook.com/nxtbooks/ieeusa/ieeusa\\_winter11/](http://www.nxtbook.com/nxtbooks/ieeusa/ieeusa_winter11/)) includes a look at the results from IEEE-USA's latest salary survey, a recap of a Future Media roundtable on future megatrends, coverage of Houston Section members' efforts to bring a teacher in-service program to Texas schools, and much more. You may also download a PDF of this issue for offline reading. And our new app for iPad and iPhone is now available through the Apple App Store.



**IEEE USF Engineering EXPO 2012**

USF's 40th engineering expo took place on February on the 17<sup>th</sup> and 18<sup>th</sup>, in hopes to educate k-12 students about science, math, and engineering. The IEEE USF student chapter participated this year by holding its annual laser show for the students, along with various mini exhibits. This year's laser show was planned by the Expo chair of the student Chapter, Naval Dhawan, and presented by himself and Felipe Tranquilini.

This year's expo exhibit was among the best ever because it incorporated not only the laser show but also mini exhibits, such as RC toys and a Theremin, for students to play with. An estimated 5,500 people formed large lines outside of the door every hour to come to see the show.



The show itself was composed of a presentation on energy and waves followed by the laser show. Students were able to learn how energy is transferred, and some of the properties of waves. There was also a demo of a Theremin that showed the principles of frequency and amplitude. The laser show itself was 8 minutes long, which was accompanied by some electronic music in the background.

The laser itself was sponsored by One Stop Laser Shop. All the RC toys were sponsored by Hobby town USA.

*Disha Saha*

*IEEE USF Vice Chair*



# 2012 IEEE POWER & ENERGY SOCIETY TRANSMISSION AND DISTRIBUTION CONFERENCE AND EXPOSITION

# 2012

## *Making Innovation Work For Tomorrow*

**Experience It!**  
**ORLANDO, FLORIDA**  
**MAY 7-10, 2012**



**Bigger and better than ever...The industry's most powerful worldwide event!**

Unmatched in its level of technical information and content...and a high-powered exposition with 700 exhibiting companies who are interested in providing you with solutions to your challenges of today and tomorrow.

In four exciting days you will hear significant information from conference and exposition speakers who are well-informed about overhead and underground, substation development, automation systems, load and energy management, Smart Grid and green technologies, safety and training and improved productivity and work procedures.

As an attendee you will:

- Learn the latest technical developments that increase electric utility efficiency, reliability and profitability.
- Improve both individual and utility performance and operation.
- Acquire new skills that will help you to survive and compete in the evolving power-delivery industry.
- Maximize the return on your education and training investment.
- Meet with leading technical experts.
- View the newest products and technologies.
- Get acquainted with industry peers.

Attendees can participate in and choose from the following:

- Super Sessions focusing on the Smart Grid, Renewables, Sustainable Energy and a whole lot more.
- Poster and conference papers written and presented to address every conceivable subject.
- Panel sessions detailing the latest technological innovations.
- Educational tracks with university professors lecturing on power engineering and operating advancements.
- Info sessions that allow experts to detail the exciting dimensions of their business.
- Collegiate papers that will be judged by a panel of engineers from industry and higher learning.

**Your Visit to Orlando**

Ever-changing and ever-growing, Orlando offers diverse features that seamlessly mesh in one ideal destination. Theme parks and first-rate tourist attractions stand alongside a wide array of cultural venues, promising something for everyone!



**Watch for updates at:**  
**[www.ieeet-d.org](http://www.ieeet-d.org)**



## **Making Innovation Work for Tomorrow....From May 7 - 10, 2012**

Orlando Utilities Commission and Progress Energy are hosting the 2012 IEEE PES Transmission and Distribution Conference and Exposition ([www.ieeet-d.org](http://www.ieeet-d.org)) at the Orange County Convention Center. This event provides power and energy professionals throughout the United States and around the world with the latest technical information, trends and best practices as well as significant networking opportunities.

Orlando and Orange County will attract hundreds of exhibitors from around the world, host technical presentations, tutorials, panel sessions, student poster sessions as well as a job-fair and numerous other events on nearly every topic of interest in the world of electric energy and power delivery.

All this activity requires the assistance of numerous volunteers to make this conference and exposition a success for the power industry.

We are asking the Florida electric utility community to help support this event and to sign-up to be a volunteer. The dates of the volunteer opportunities are from May 7 - 10. Volunteers are needed for a variety of assignments, including event information, registration, bus monitors, special event staffing, conference and exposition hall greeters and monitors, room monitors, technical tour guides/ chaperones, and others yet to be determined. There will be opportunities to work a morning, afternoon, or all day shift.

Volunteers receive free attendance to the exhibit hall for the amount of time they serve (Volunteering for a half-day shift provides a free half-day of access to the exhibits). If you are an industry professional this is an excellent way to help make this event a success for the Florida electric utility community and to gain some free admission to the event. If you are a student considering a career in this rapidly growing and important field, this is a great opportunity to learn about the industry and even apply for a position at the student job fair.

Please visit the Volunteer Form <http://www.showmanagement.us/ieeee/volunteer.html> on the T&D conference website for conference information and to sign-up and participate in this significant event.



## Tour of Wheelabrator Ridge Energy Inc.

- Date:** Thursday, April 26, 2012
- Time:** 2:00PM - 4:00PM.
- Speaker:** Jose Tirado
- Location:** 3131 K-ville Avenue Auburndale, FL 33823
- Cost:** Free for IEEE Members, \$20 Non-Members,
- RSVP:** Online at: <http://time2meet.com/fwcs-pes2/index.html>
- Questions:** Serge Beauzile at 863-834-6511 or [Serge.Beauzile@ieee.org](mailto:Serge.Beauzile@ieee.org)

Come join your PE/IA Chapter for an educational Tour of the Wheelabrator Ridge Energy in Auburndale, Florida. Wheelabrator Ridge independent power plant provides dependable, environmentally safe disposal of waste wood, scrap tires, and landfill gas, while generating 50 MW of clean renewable electricity for sale to local utility.

Wheelabrator Ridge accepts both processed and unprocessed waste wood and scrap tires. On-site shredding equipment grinds waste wood and scrap tires, which are then put on a conveyor belt that feed into hoppers. The hoppers deliver the material to a boiler that produces 345,000 pounds per hour of steam, which drive a turbine generator to produce electricity.

The facility meets stringent air quality control requirements. The air quality control system consists of a selective non-catalytic reduction system for controlling NOx, and a dry scrubber and fabric filter baghouse for control of acid gases and particulate matter

Wheelabrator Ridge is one of the largest and most successful developers, owners, and operators of commercial waste-to-energy and independent power plant projects.

### Facts on the facility:

**Gross Capacity:** 50MW

**Furnaces/Boilers:** 345,000 lbs./hr. steam

**Fuel Consumption:** 300,000 tons of waste wood, 30,000 tons of scrap tires and 500,000Mcf of landfill gas.



## Engineers, Inspiring a New Generation of What If

Watch how engineers are crossing engineering disciplines and industries to apply computing, technology, math and science to solve complex world problems. The video encourages viewers to think about how the 1.6 million engineers worldwide are behind some of the greatest innovations and inventions of modern times.

Download or view this inspiring video at <http://solutionists.ieee.org/>.



## *White Book Seminar*

**Date:** May 2012  
**Cost:** \$100 IEEE Members, \$200 Non-Members  
**Time:** 9:00AM - 2:00PM.  
**Speaker:** Hank Johnson, P.E. and Curtis Latzo, PhD, P.E.  
**RSVP:** Online at: <http://www.ewh.ieee.org/r1/floridawc/> (Select Reservations)

**Location:** TBD

**Cash or checks should be payable to:** IEEE FWCS Treasurer, John Stankowich

**PDH Credits:** 4 professional development hours will be awarded. Be sure to enter you name and PE number on the signup website as it appears on your license. IEEE Florida Provider Number 3849.

**Questions:** Tom Blair at 813-228-1111, ext. 48179 or [tom\\_blair@ieee.org](mailto:tom_blair@ieee.org)

**Seminar Description** Your local IEEE PES/IAS chapter is offering this seminar on IEEE Std 602 Recommended Practice for Electric Systems in Health Care Facilities, The White Book.

Due to the increasing size and complexity of health care facilities, they have become more and more dependent upon safe, adequate, and reliable electrical systems. The IEEE White Book aids electrical system designers in achieving safety of life and preservation of property through operational considerations to reduce electrical failures; maintenance with a minimum need for specialized services; design considerations that recognize the flexibility of electrical systems in terms of layout and placement and fulfill the requirements for proper electrical installation; and coordination of design with professional associates.

**Speaker Bio:** With over 40 years combined experience in electrical design and system studies, the speakers will present the foundation and principles of the White Book. Furthermore, the seminar will include some specific electrical engineering requirements in the State of Florida due to The Agency for Health Care Administration (AHCA). Additionally, the aspects of paralleled generator sets in large hospital electrical systems will be presented and discussed. Founded in 1989 by G.L. (Hank) Johnson, The GL Johnson Company is a consulting engineering company providing design and expertise in Electrical Engineering. The company grew throughout the 1990's from a single person company to a seven person design firm. Several years ago the company was acquired by Latzo Industries, Inc., founded in 1998, to form Arc Flash Study Pro. It has returned to a three person company where the registered principles have limited their practice to a choice group of clients. The focus of the Company's practice is with critical electrical systems where generators, UPS systems, and reliable power distribution systems are necessary. Arc Flash Hazard Analysis, Short circuit and coordination studies at medium and low voltage for health care, institutional, industrial, telecommunication and municipal clients are the core segment of the business.







## IEEE Gold Event

The IEEE GOLD held a joint event with the USF career center; Professional Business Etiquette Dinner on Thursday March 1, 2012, 5:30-7:30 p.m. at the USF Alumni Center.

In a highly competitive work world, proper business etiquette skills are extremely important. "Interview meals" are becoming very popular among employers; and beyond the interview, business is often conducted during lunches, receptions and formal dinners. The dinner was presented by a certified business etiquette trainer in a fun, non-threatening way to learn business etiquette skills while enjoying a full-course meal



## Advertising Section

 <p style="text-align: center;"><b>Jacklin IP LAW, PLC.</b> AN INTELLECTUAL PROPERTY LAW PRACTICE</p> <p style="text-align: center;">t 813.489.5450 f 813.527.9952</p> <p style="text-align: center;">Kim Jacklin JD, BSEE REGISTERED U.S. PATENT ATTORNEY</p> <p style="text-align: center;">KJACKLIN@JACKLINPATENTS.COM</p> <p style="text-align: center;">2405 CREEL LANE SUITE 102 WESLEY CHAPEL, FLORIDA 33544 WWW.JACKLINPATENTS.COM</p>	<p style="text-align: center;"><b>Qualified Communication Services, Inc.</b></p> <hr style="border: 2px solid red;"/> <p>Editorial Services Technical Writing Training Web Content</p> <p style="text-align: right;"><b>Lesley Peters</b> President</p> <p><b>813-964-9085</b> lesleypeters@qcommservices.com</p> 	<p>SmartGrid Cap Controllers, Transformers, Power Transformer Coolers, Pumps, Valves, And Radiators, Switchgear, Insulators</p> <p><b>Powers &amp; Company, Inc.</b></p> <p>(813) 282-3011 P.O. Box 10458 Fax (813) 282-3298 Tampa, Florida 33679 powerscomp@aol.com cell (813) 760-2556</p> <p>Dick Powers BSEE IEEE/PES Member</p>																																																							
<table border="1" style="width: 100%; border-collapse: collapse; text-align: center;"> <thead> <tr> <th rowspan="2">Size</th> <th colspan="2">One Month</th> <th colspan="2">6 Months</th> <th colspan="2">12 Months</th> </tr> <tr> <th>Member</th> <th>Non-Member</th> <th>Member</th> <th>Non-Member</th> <th>Member</th> <th>Non-Member</th> </tr> </thead> <tbody> <tr> <td><b>Business Card</b></td> <td>\$25</td> <td>\$33</td> <td>\$120</td> <td>\$150</td> <td>\$210</td> <td>\$252</td> </tr> <tr> <td><b>¼ Page</b></td> <td>\$40</td> <td>\$52</td> <td>\$190</td> <td>\$238</td> <td>\$335</td> <td>\$402</td> </tr> <tr> <td><b>½ Page</b></td> <td>\$75</td> <td>\$98</td> <td>\$360</td> <td>\$450</td> <td>\$630</td> <td>\$756</td> </tr> <tr> <td><b>¾ Page</b></td> <td>\$110</td> <td>\$143</td> <td>\$530</td> <td>\$663</td> <td>\$925</td> <td>\$1,110</td> </tr> <tr> <td><b>Full Page</b></td> <td>\$140</td> <td>\$182</td> <td>\$670</td> <td>\$838</td> <td>\$1,175</td> <td>\$1,410</td> </tr> <tr> <td><b>Insert / Sheet</b></td> <td>\$200</td> <td>\$260</td> <td>\$800</td> <td>\$1,000</td> <td>\$2,000</td> <td>\$2,400</td> </tr> </tbody> </table>			Size	One Month		6 Months		12 Months		Member	Non-Member	Member	Non-Member	Member	Non-Member	<b>Business Card</b>	\$25	\$33	\$120	\$150	\$210	\$252	<b>¼ Page</b>	\$40	\$52	\$190	\$238	\$335	\$402	<b>½ Page</b>	\$75	\$98	\$360	\$450	\$630	\$756	<b>¾ Page</b>	\$110	\$143	\$530	\$663	\$925	\$1,110	<b>Full Page</b>	\$140	\$182	\$670	\$838	\$1,175	\$1,410	<b>Insert / Sheet</b>	\$200	\$260	\$800	\$1,000	\$2,000	\$2,400
Size	One Month			6 Months		12 Months																																																			
	Member	Non-Member	Member	Non-Member	Member	Non-Member																																																			
<b>Business Card</b>	\$25	\$33	\$120	\$150	\$210	\$252																																																			
<b>¼ Page</b>	\$40	\$52	\$190	\$238	\$335	\$402																																																			
<b>½ Page</b>	\$75	\$98	\$360	\$450	\$630	\$756																																																			
<b>¾ Page</b>	\$110	\$143	\$530	\$663	\$925	\$1,110																																																			
<b>Full Page</b>	\$140	\$182	\$670	\$838	\$1,175	\$1,410																																																			
<b>Insert / Sheet</b>	\$200	\$260	\$800	\$1,000	\$2,000	\$2,400																																																			
<div style="text-align: center;">  <p style="color: red; font-weight: bold;">Unforgettable communication skills that will set your ideas free...</p>  <p><b>Dr. Jim Anderson</b> jim@BlueElephantConsulting.com President Phone: 813.418.6970 www.BlueElephantConsulting.com</p> <p>P.O. Box 341734, Tampa, Florida 33694-1734</p> </div>																																																									
<p style="font-size: 1.2em; font-weight: bold;">Your advertisement here reaches over 2300 members in the local area!</p>																																																									





## **Members, You Have a Choice!**

**It's not too late to add a MEMBER'S candidate**

**Put Howard Michel on the Ballot for IEEE President-Elect**

**Sign my petition at <http://www.ieee.org/petition>**

**Congratulations to the elected USF student officers for  
Fall 2012 to Spring 2013!**

- Chair - David Touvell  
([dtouvell@mail.usf.edu](mailto:dtouvell@mail.usf.edu))
- Vice-Chair - Disha Saha  
([dsaha@mail.usf.edu](mailto:dsaha@mail.usf.edu))
- Secretary - Kelley Allenegui  
([kga@mail.usf.edu](mailto:kga@mail.usf.edu))
- Treasurer - Felipe Tranquilini  
([ftranqui@mail.usf.edu](mailto:ftranqui@mail.usf.edu))
- Public Relations - Federico Diamante  
([fdiamante@mail.usf.edu](mailto:fdiamante@mail.usf.edu))
- Co-Membership Chair - Ken Almirol and Stephen Collins  
([aalmirol1@mail.usf.edu](mailto:aalmirol1@mail.usf.edu) and [collinss@mail.usf.edu](mailto:collinss@mail.usf.edu))
- Webmaster/Design Chair - Palan Seemangal  
([pseemang@mail.usf.edu](mailto:pseemang@mail.usf.edu))
- Logistics Chair - Mikel Graves  
([mikelgraves@mail.usf.edu](mailto:mikelgraves@mail.usf.edu))
- Co-Projects Chair - Robert Orcutt and Mike Jennings  
([rdorcutt@mail.usf.edu](mailto:rdorcutt@mail.usf.edu) and [mwjennings@mail.usf.edu](mailto:mwjennings@mail.usf.edu))
- EXPO Chair - Naval Dhawan  
([ndhawan@mail.usf.edu](mailto:ndhawan@mail.usf.edu))
- S-PAC Chair - Shawn Gicka  
([gickas@mail.usf.edu](mailto:gickas@mail.usf.edu))





Florida West Coast Section, Tampa

**DATE SENSITIVE MATERIAL. DO NOT DELAY**

Change of address? IEEE Web Contact Update <http://www.ieee.org/membership/coa.html>  
Or send address changes including your name, IEEE Member number and all pertinent information to:  
IEEE, 445 Hoes Lane, P.O. Box 1331, Piscataway, NJ 08855-1331 or call (800) 678-4333  
Or fax your address changes to (732) 562-5445

April 2012 Calendar of Events (For more information see P. 1) *inside this Signal...*

Sunday	Monday	Tuesday	Wednesday	Thursday	Friday	Saturday
1	2	3 EXCOM Meeting at TECO Hall, see page 1	4	5	6	7
8	9	10	11	12	13	14
15	16	17	18	19	20	21
22	23	24	25	26 PES EXCOM Meeting at 6AM Wheelbrator Ridge Energy Inc., Tour(pg 7)	27	28
29	30	1	2	3	4	5